

ProductCenter™ SolidWorks Integrator

Collaborative Product Data Management on the SolidWorks® Desktop

The **ProductCenter™ SolidWorks Integrator** is your conduit to ProductCenter collaborative product data management (PDM) on your SolidWorks® desktop. ProductCenter provides a fully integrated design environment of all your CAD resources and associated product data, along with flexible change and configuration management, workflow to automate product processes and reviews, and comprehensive bills of material (BOM) management. ProductCenter hones your competitive edge, streamlining product data and processes to deliver significant improvements in development cycle times, cost and quality.

ProductCenter Integrators are fine-tuned to take advantage of your CAD application's unique features, including support for assembly and part configurations, as well as derived, base, mirrored, and joined parts with SolidWorks. It also enables you to conveniently populate BOMs directly from your CAD models and assemblies, providing earlier exposure to your product definitions for better planning and coordination.

HIGHLIGHTS...

- **Store, retrieve, and control SolidWorks drawings, assemblies, parts, and other product data**
- **Manage version/revision changes**
- **Automate business processes such as ECO/ECN approvals**
- **Synchronize CAD designs and engineering BOMs**
- **Facilitate enterprise-wide collaboration**
- **Adhere to regulatory requirements such as ISO, Six Sigma, and FDA**

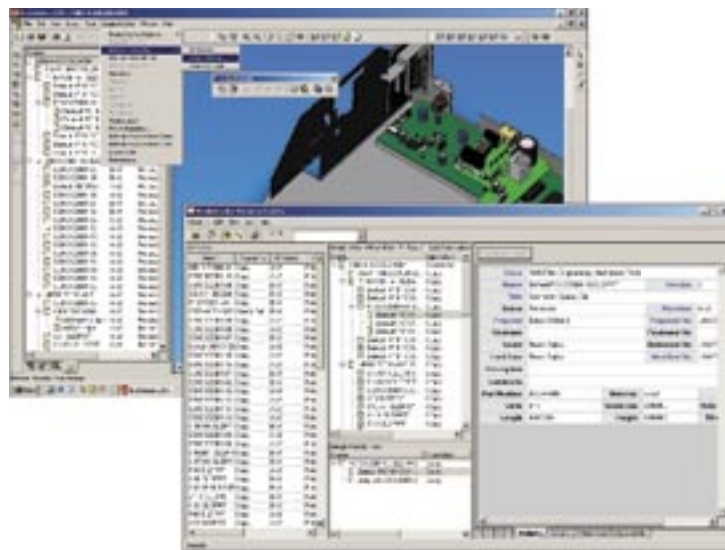
Engineering-Centric Collaboration Enables Optimum Innovation, Accuracy and Speed

Product Development Collaboration

ProductCenter provides a common collaborative platform across your extended product teams of employees, suppliers, and customers, encouraging earlier communication and collaboration.

Comprehensive Change Management

From within SolidWorks, ProductCenter manages and updates the versions, revisions, and releases of every file in the assembly, preventing changes by other users until the item is fully released.



ProductCenter's unique Hierarchy Explorer provides for quick, easy management of SolidWorks designs and other related product documents directly from within SolidWorks.

Linking Data for More Cost Effective Reuse

ProductCenter allows association and synchronization of other items to your SolidWorks CAD files for more comprehensive product definitions and greater reuse of all your product data — not just your CAD files.

Implementing with Ease / Low Cost of Ownership

ProductCenter lends itself to rapid deployment, with many companies successfully implementing in just weeks. Cost of ownership is low, with 1,000+ user implementations managed often with a single administrator.

Flexibility and Scalability to Grow

ProductCenter's flexibility and scalability lets you start small to solve a specific problem or quickly expand your implementation to support a global organization of distributed facilities, customers, and supply chain partners.

Tight Knit Integrations in a Multi-CAD Environment

As a *SolidWorks® Certified Gold Product*, ProductCenter provides the highest level of integration with SolidWorks. Through a common integrator framework, ProductCenter provides consistency between all ProductCenter integrations with the industry's most popular CAD applications for ease of use and interoperability with all your design tools.

Intuitive Hierarchy Explorer Interface

With seamless access from within SolidWorks, ProductCenter's *Hierarchy*

(Continued on back)

IMPROVE THE MANAGEMENT OF DATA THAT DRIVES YOUR PRODUCT SUCCESS...

Explorer provides a central control for storage and retrieval of product data where users can conveniently check in and out data and drill down on the hierarchy to explore other details.

Accelerated Design Reviews

Quickly submit a completed design for review with a few mouse clicks or keystrokes. Easily attach supporting documentation to SolidWorks design files for more complete, detailed review packages and faster approvals.

Automated Business Processes with Workflow

ProductCenter™ Workflow automates business processes such as design reviews, notifying users of assignments in their desktop *Worklist* or Claimable file areas. For many companies, ECO automation alone with *ProductCenter Workflow* has reduced product lifecycles by 60% or more for considerable cost and time-to-market advantage.

Advanced Search Capability

Quickly find what you need with *ProductCenter's Search* dialog. Query for specific items or workflow activities or instances for an instant assessment of ongoing projects or to assess the impact of a change.

Enterprise Data Exchange

Support for HTML, XML and XSL industry standards allows data exchange and communication between *ProductCenter* and your other critical enterprise applications, such as ERP, MRP, and SCM systems.

Synchronize CAD Designs and Engineering BOMs

With convenient *BOM Export/Import* capability, *ProductCenter* allows attributes and other mapped data items to be directly extracted from your CAD assembly hierarchy (or any application supporting XML) to automatically populate engineering BOMs for management by the *ProductCenter™ BOM Editor*. This not only simplifies BOM creation but also importantly provides earlier exposure to your product definition for better planning and coordination by all those involved with your product processes.

Assembly Configuration Support

ProductCenter allows convenient navigation and study of any assembly configuration related to a hierarchy to more effectively and accurately manage generics or instances of commonly used assemblies, parts or components.

Automated Viewable Generation

ProductCenter™ GenView automates conversion of almost any document into viewable file formats such as Adobe® PDF (Portable Document Format), on demand or automatically at a prescribed time such as product release. The PDF can then be viewed and marked up by any employee on any system, without need of more costly authoring tools or viewer/mark-up applications. Plus, with the viewable file linked and maintained under *ProductCenter* control, you'll know the viewable you access will always be current.

“Users were impressed when they saw how quick and efficient it was to manage even the more complex SolidWorks product hierarchies in *ProductCenter*. It not only streamlined processes but also facilitated much needed communication. Out of the gate, *ProductCenter* helped us catch several potentially costly errors up front before impacting customer deliveries.”

■ Brad Fluit, Engineering Systems Administrator
Monarch Hydraulics

Speedy Data Migration Maximizes Legacy Data Value

ProductCenter™ BatchLoader speeds migration of vast loads of legacy data into *ProductCenter*, maximizing use of this valuable data to jumpstart PDM deployment productivity and return on investment.

Simplified, Flexible Reporting

ProductCenter's Report Module provides users with access to product information through the creation and usage of *Item Reports* for item version/revision history; *Product Hierarchy Reports* to clarify the full product structure and all related items; *Workflow Reports* for the status of all ECOs in the system, or for an audit trail review of the history of a workflow, typically to address bottleneck situations; and *BOM Reports* for generation of a single or multi-level expansion of the BOM or other analysis, such as a cost/quantity rollup report to determine product costing.

Security and Regulatory Compliance

Design integrity is enforced through comprehensive release management, user permissions, passwords, and a full audit trail of all changes for ISO, Six Sigma, and FDA compliancy.

ProductCenter™

SPECIFICATIONS

Version: 8	Web Client: Netscape®, Microsoft® Internet Explorer.
Client: Microsoft® Windows® 2000/NT/XP, Sun Solaris™, HP-UX	Web Server: iPlanet™ Web Server, Microsoft® Internet Information Server, Apache™ Web Server
Server: Microsoft® Windows® 2000/NT, Sun Solaris™, HP-UX	Database: Oracle®



SofTech INC.

CORPORATE HEADQUARTERS:

Two Highwood Drive Telephone: (978) 640-6222
Tewksbury, MA 01876 E-mail: info@softech.com
USA Web: www.softech.com

For More Information:

E-mail info@softech.com
or visit www.softech.com