

ProductCenter™ FrameMaker Integrator

An Integrated Product Data Management, Document Authoring, and Publishing Environment

Your product content extends beyond CAD files to encompass many other forms of product information important to the development, manufacture, and support of your products, including user and installation manuals, specifications, and other documents developed with popular authoring and publishing tools such as Adobe® FrameMaker®. It is not uncommon for these documents to be managed using rudimentary date-coded file names and to be scattered on multiple personal computer systems throughout a company.

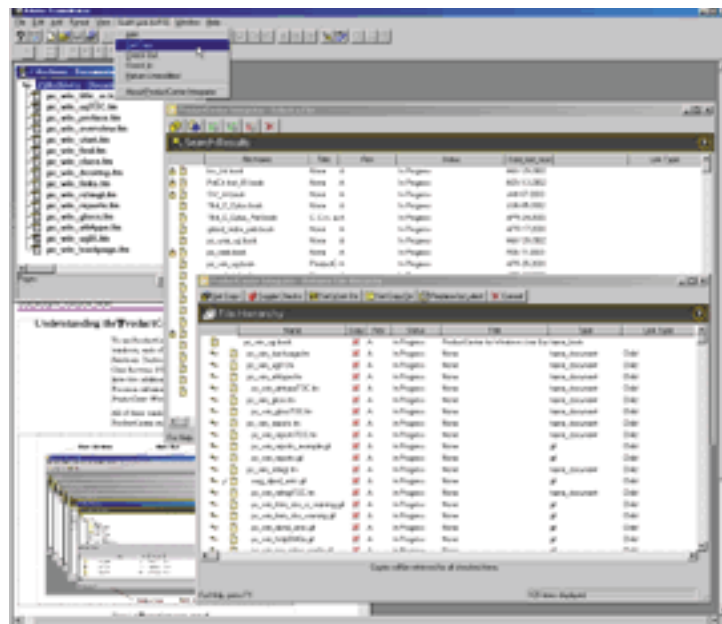
For the many types of products and permutations you produce, these documents may range in the thousands, with many changes and revisions happening daily. Unfortunately, out-of-control document management not only complicates the process of finding, updating, and approving these documents, but it also jeopardizes final product release schedules and adds cost.

The **ProductCenter™ FrameMaker Integrator** provides the needed level of document control, integrating ProductCenter™ collaborative product data management (PDM) directly within FrameMaker's menus. With ProductCenter functionality directly accessible from within FrameMaker, and all related product data linked and stored in ProductCenter, each team member can easily locate, control versions and revisions, and better manage accelerated release of this very critical product component.

ProductCenter takes advantage of the unique features of FrameMaker, allowing your *File Selection Screen* (Desktop) to be set to display any combination of custom and common attributes, with associations that can be built from FrameMaker books and hyperlinks. It also enables ProductCenter attributes to be built directly from FrameMaker variables for improved data integrity between systems.

HIGHLIGHTS

- **Adds ProductCenter access functions conveniently to FrameMaker menus with a friendly user interface that's easy to set up and learn**
- **Manages the many version/revision changes you make to FrameMaker documents**
- **Saves time looking for valuable documents**
- **Automates and keeps document approvals moving to eliminate hold-ups**
- **Synchronizes and links all product data including FrameMaker documentation**



The ProductCenter™ FrameMaker Integrator provides centralized data access and control of valuable FrameMaker documents critical to your product efforts.

Maximizing Your Critical Product-centric Documents

Comprehensive Release Management

ProductCenter replaces inefficient, error-prone manual methods to provide centralized access and improved control of your FrameMaker documents. Right from an integrated menu in FrameMaker, ProductCenter seamlessly manages versions and revisions to your documents, while preventing simultaneous access to documents during the change process by other users until the document is released.

Enhances Communication and Collaboration

In a single, well-integrated environment, users can create, modify, view, and easily share documents — resulting in a controlled, auditable document management system for all product related data. Your company will gain significant, quantifiable savings from the added efficiencies and streamlined communications that will result with ProductCenter.

(Continued on back)

IMPROVE THE MANAGEMENT OF DATA THAT DRIVES YOUR PRODUCT SUCCESS...

Quicker Reference and Research

Your staff will save on the footwork with easy, quick access to the full gamut of product data you produce — all linked for quicker reference and research. A very simple to use search interface built into your FrameMaker menus allows attribute-base, case sensitive searches to find the items that you're looking for. You'll always know you're working with the latest version yet will have access to prior versions, if you need them.

Accelerated Document Reviews with Workflow

ProductCenter™ Workflow can automate complex review cycles and even provide 'heads-up' e-mail notification of impending product changes. Initiators can assemble more complete documentation packages of not just FrameMaker documents but also computer-aided designs and other supporting material and launch them for review. Reviewers can approve and forward documents with comments or return them for additional work or clarification. Processes are streamlined and decisions made more quickly with supporting information at hand, as well as immediate insight into where each item stands, eliminating bottlenecks and hold-ups.

Requires Little User Training, If Any

Minimal user training is required as a result of ProductCenter's intuitive user interface. Training takes less time and users' input is more accurate from the start.

Automated Viewable File Generation

ProductCenter™ GenView simplifies and automates conversion of FrameMaker documents into common viewable file formats such as Adobe® PDF (Portable Document Format) for document output, exchange, and viewing. Versus having to individually create viewables, ProductCenter automates conversion of your documents on the occurrence of a specified event, such as document release. Plus, with the viewable file linked and maintained under ProductCenter control, you'll know the viewable file you access is always the most current.

Speedy FrameMaker Document Migration

When just beginning or extending your PDM solution, you may be overwhelmed with the thought of what to do with the multitude of FrameMaker documents that exist in your archives. ProductCenter™ BatchLoader takes the worry out of this process by automating and speeding the migration of all forms of items into ProductCenter, including FrameMaker documents.

Protecting Document Security

Document integrity is enforced through ProductCenter's comprehensive release management, user permissions, passwords, and a full audit trail of

document versions/revisions for historical reference and to protect the security of your FrameMaker and other documents.

Aids Regulatory Compliance

FrameMaker documents are often a critical element of the documentation packages assembled for regulatory compliance. Having documents more easily accessible and under control in ProductCenter eases the burden of compliancy, while significantly reducing the time it takes to assemble documents for agency review.

ProductCenter™

SPECIFICATIONS

Version: 8	Web Client: Netscape®, Microsoft® Internet Explorer.
Client: Microsoft® Windows® 2000/NT/XP, Sun Solaris™, HP-UX	Web Server: iPlanet™ Web Server, Microsoft® Internet Information Server, Apache™ Web Server
Server: Microsoft® Windows® 2000/NT, Sun Solaris™, HP-UX	Database: Oracle®



SofTech INC.

CORPORATE HEADQUARTERS:

Two Highwood Drive Telephone: (978) 640-6222
 Tewksbury, MA 01876 E-mail: info@softech.com
 USA Web: www.softech.com

For More Information:

E-mail info@softech.com
 or visit www.softech.com