

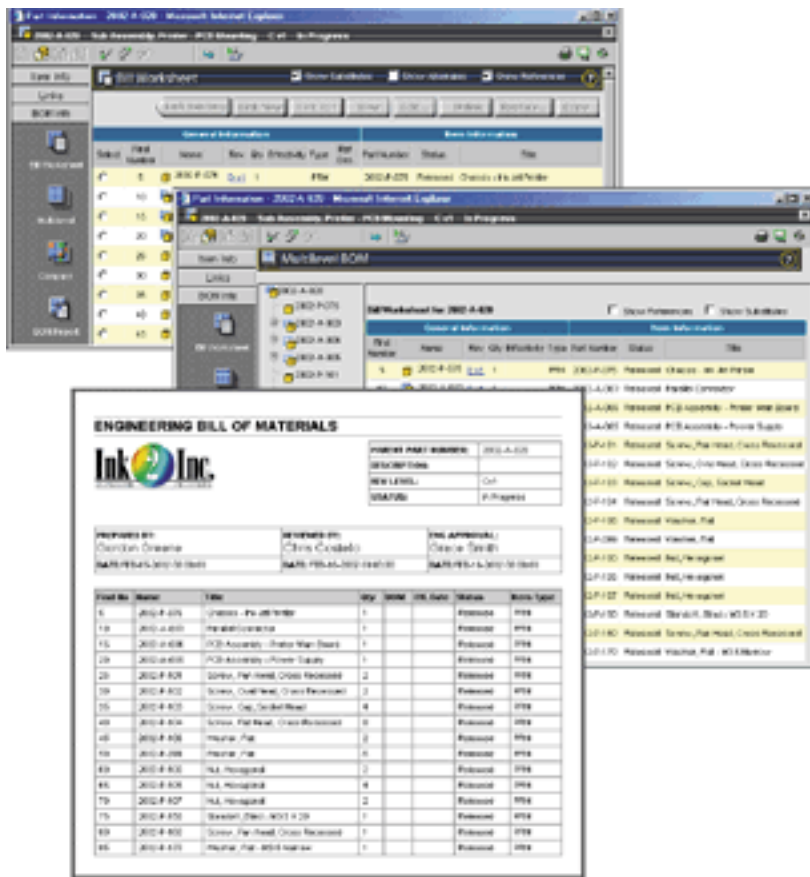
ProductCenter™ BOM Editor

Streamlined Bill of Materials (BOM) Management with ProductCenter™

Many companies today maintain engineering bills of material (BOMs) using office applications not really built for the job. Errors arise by having to consolidate BOM data from multiple sources, such as MCAD, ECAD, and software applications, and with little control, it may be difficult to know which is the most current BOM. Additionally, the resulting engineering BOM can't be readily shared with downstream ERP/MRP systems so, the rekeying process begins again — with greater chance of error that can potentially create costly problems in production.

SofTech's **ProductCenter™ BOM Editor** simplifies the process of BOM creation and changes, consolidating BOM information from multiple sources, and with creating and exchanging BOMs throughout your enterprise. The ProductCenter BOM Editor enables inclusion of all associated product data in the BOM — from CAD models to process plans — to create a more comprehensive, fully integrated representation of your product, a “bill of information” that far exceeds the value of traditional engineering BOMs created with less comprehensive BOM tools.

With the ProductCenter BOM Editor your design teams will spend less creating and managing BOMs and more time adding value. Communications are streamlined, with product team members and external suppliers kept up-to-date and in sync, with BOMs and all product data linked to it available in a mouse click with authorized access.



The ProductCenter™ BOM Editor automates BOM creation and changes and even direct population of BOMs from your CAD models for earlier exposure to your product definitions enterprise-wide.

HIGHLIGHTS

- **BOM Creation and Updates**
- **Automatic Population of BOM from Multiple Sources**
- **CAD to BOM Export automates BOM creation directly from CAD models**
- **Easy access to product configuration information and designs**
- **Configuration management over the entire product life cycle**
- **Change history management and workflow**
- **Publish/export BOM information to enterprise systems**

Enterprise-wide BOM Automation

Automatic Population of BOM from Multiple Sources

ProductCenter supports open standard XML BOM import/export capabilities to directly populate BOMs from your CAD models, or to consolidate BOMs from multiple sources. As a result, BOMs are created earlier — and just once — to share with downstream enterprise systems for enhanced communications, more well coordinated planning by all

(Continued on back)



IMPROVE THE MANAGEMENT OF DATA THAT DRIVES YOUR PRODUCT SUCCESS...

those that participate in your product processes, and improved accuracy between systems.

Release Control

ProductCenter's release control manages and records the changes that occur to your BOMs, upping version/revision levels whenever changes are made.

Named Links Associate BOMs to All Other Product Data

Use *Named Links* to assign meaningful names to links from the BOM to all interrelated product documents and drawings. For example, create a *Named Link* called 'ECO' from a BOM to an engineering change order to ensure that the engineering change process is connected to the released product configuration.

Flexible Attribute Management

Define any number of custom BOM attributes, including vendor and cost, and assign manufacturing cut-in by serial number, lot number, or date. Use fractional quantities and extended units of measure. Easily establish links from primary parts to substitute, alternate, and optional parts, and create convenient links to referenced items.

Enhanced Communication and Planning

With all associated data in sync and accessible via a mouse-click directly from the BOM, users enterprise-wide share the advantage of working with timely, accurate product information. Ancillary product functions, even supplier communications, are carried out more efficiently based on the most up-to-date designs and earlier exposure to BOMs.

Simple BOM Creation/Change Tools

It's extremely easy to edit any element of the BOM with the ProductCenter BOM Editor, copy or rename existing BOMs to serve as a basis for a new BOM, or perform mass change operations, all with appropriate release controls in check.

Assess Impact of Changes

Easily perform BOM comparisons to see changes between revisions or across multiple BOMs from different sources, including suppliers.

Comprehensive Reporting

ProductCenter's *Report Editor* simplifies report creation by administrators and users alike, extending the reach and value of your product information. Out-of-the-box templates provide commonly run reports for a quick start or to serve as a basis for customized reports. Flexible viewing and reporting allow you to view or run reports of fully exploded multi-level BOMs or collapse the BOMs to a single level for other analysis.

Automated BOM Approval Processes

When combined with *ProductCenter™ Workflow*, you get a single solution for managing product configurations to speed product development and release to manufacturing, enabling you to move BOMs through a formal, automated approval process, with supporting data packages attached.

ProductCenter™

SPECIFICATIONS

Version: 8	Web Client: Netscape®, Microsoft® Internet Explorer.
Client: Microsoft® Windows® 2000/NT/XP, Sun Solaris™, HP-UX	Web Server: iPlanet™ Web Server, Microsoft® Internet Information Server, Apache™ Web Server
Server: Microsoft® Windows® 2000/NT, Sun Solaris™, HP-UX	Database: Oracle®



SofTech INC.

CORPORATE HEADQUARTERS:

Two Highwood Drive Telephone: (978) 640-6222
 Tewksbury, MA 01876 E-mail: info@softech.com
 USA Web: www.softech.com

For More Information:

E-mail info@softech.com
 or visit www.softech.com